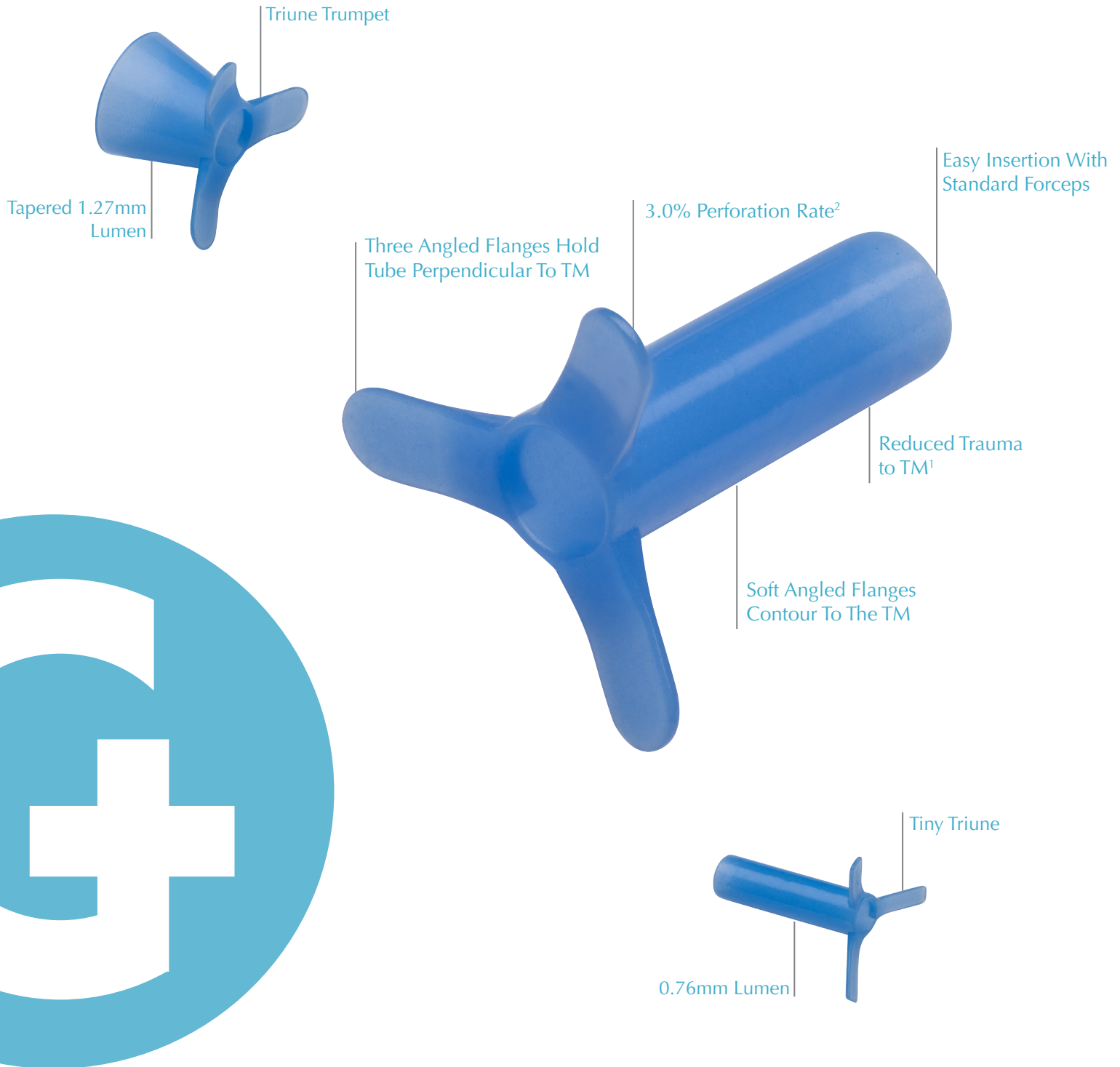


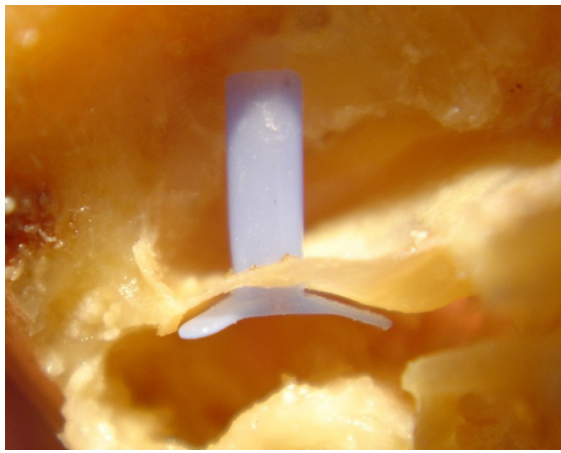
Triune Tube



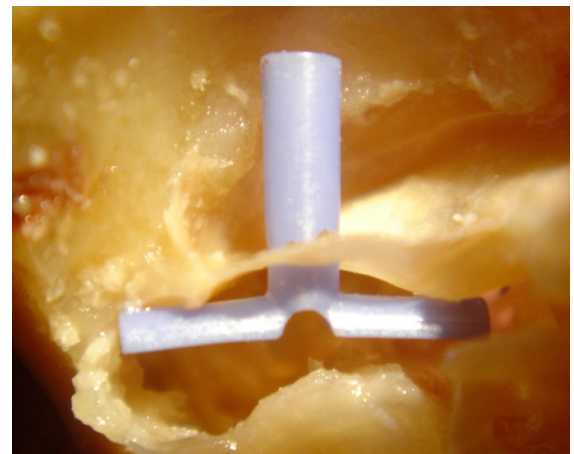
Designed in conjunction with Frank Hill, MD Columbia, SC

8500 Wolf Lake Drive, Suite 110 • Memphis, TN 38133 • USA Toll Free 1.866.472.2363 • www.gracemedical.com

LIT0056 CID3049

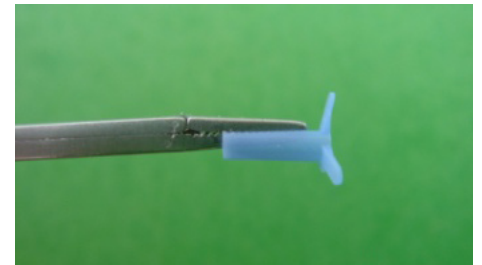


Triune Tube

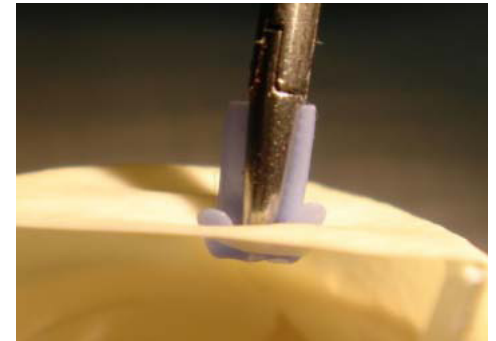


T-Tube

- 3025 Triune tubes were inserted from March 04 to March 08; 2358 tubes seen in follow-up with an average extrusion at 36 months.²
- Mean follow-up of 22.8 months with 8211 documented follow-up visits. ²
- Triune perforation rate is 3.0%² compared to 16.6% in 3,356 long term tubes reported by Kay, et al.³
- 6.0% Triune granuloma incidence, all resolving on drops.²
- 28% otorrhea rate² versus 33% in over 2100 long term tubes.³ (.2% Triunes removed for otorrhea² versus 4% in over 6500 tubes³)



Insertion



Triune Tube

Ref. #	Material	Lumen	Pkg.
510-121	Silicone	1.35mm	5/Bx
510-121C	PC Silicone	1.35mm	5/Bx
510-122	Silicone	1.35mm	10/Bx

Tiny Triune Tube by Bojrab

Ref. #	Material	Lumen	Pkg.
510-251	Silicone	0.76mm	5/Bx
510-251C	PC Silicone	0.76mm	5/Bx
510-252	Silicone	0.76mm	10/Bx

Tiny Triune Design Suggested by Dennis Bojrab, MD, Detroit, MI

Triune Trumpet Tube

Ref. #	Material	Lumen	Pkg.
510-301	Silicone	1.27mm	5/Bx
510-302	Silicone	1.27mm	10/Bx

1 The Triune, a New Silicone Tympanoplasty Tube, Frank Hill, MD Otolaryngology-Head and Neck Surgery (2006) 134, 524-525

2 Updated data from 2007 AAO Poster Presentation, Dr. Frank Hill

3 Kay DJ, Nelson MT, Rosenfeld RM. Meta-analysis of tympanostomy tube sequelae. *Otolaryngology Head Neck Surgery* 1999; 124:374-380.